

THE HEIGHT OF SERVICE, QUALITY,
DESIGN AND SOPHISTICATION.

THE HEIGHT OF NEW YORK LIVING
IS READY TO BE EXPERIENCED.

ONE57 graces the center of the famed Manhattan skyline. Walls of glass illuminate expansive homes of extraordinary scale and light, providing stunning views of Central Park and the skyline.

EXCEPTIONAL SERVICES
ARE PROVIDED BY PARK HYATT'S
NEW FIVE-STAR FLAGSHIP HOTEL

ONE57 AMENITIES

- 24-Hour doorman and concierge
- Private dining and function room with full catering kitchen
- Library with billiards table and 24-foot aquarium
- Arts and crafts atelier
- Screening and performance room
- Private fitness center and yoga studio
- Discreet additional 58th Street entry
- Valet parking
- Pet wash room

PARK HYATT SERVICES
AVAILABLE TO RESIDENTS

- 24-Hour room service
- In-Residence catering
- Deluxe spa services
- Housekeeping service
- Dry cleaning and laundry service
- Priority ballroom and meeting rooms access
- Business center
- Multilingual hotel staff

PARK HYATT AMENITIES

- State-of-the-art health club
- Spa Nalai
- Triple-height indoor swimming pool overlooking Carnegie Hall
- Steam rooms
- Custom designed Jacuzzi and spa portico
- Private residential elevator to swimming pool, bar and restaurant



Residence F
Floor 34

2,504 square feet | 232.6 square meters

EXTELL

www.One57Living.com

+1 212.265.1157

ONE 57 LIVING

Residence F
Floor 34

2,504 square feet | 232.6 square meters

3 Bedrooms
3 Bathrooms
Powder room

RESIDENCE FEATURES

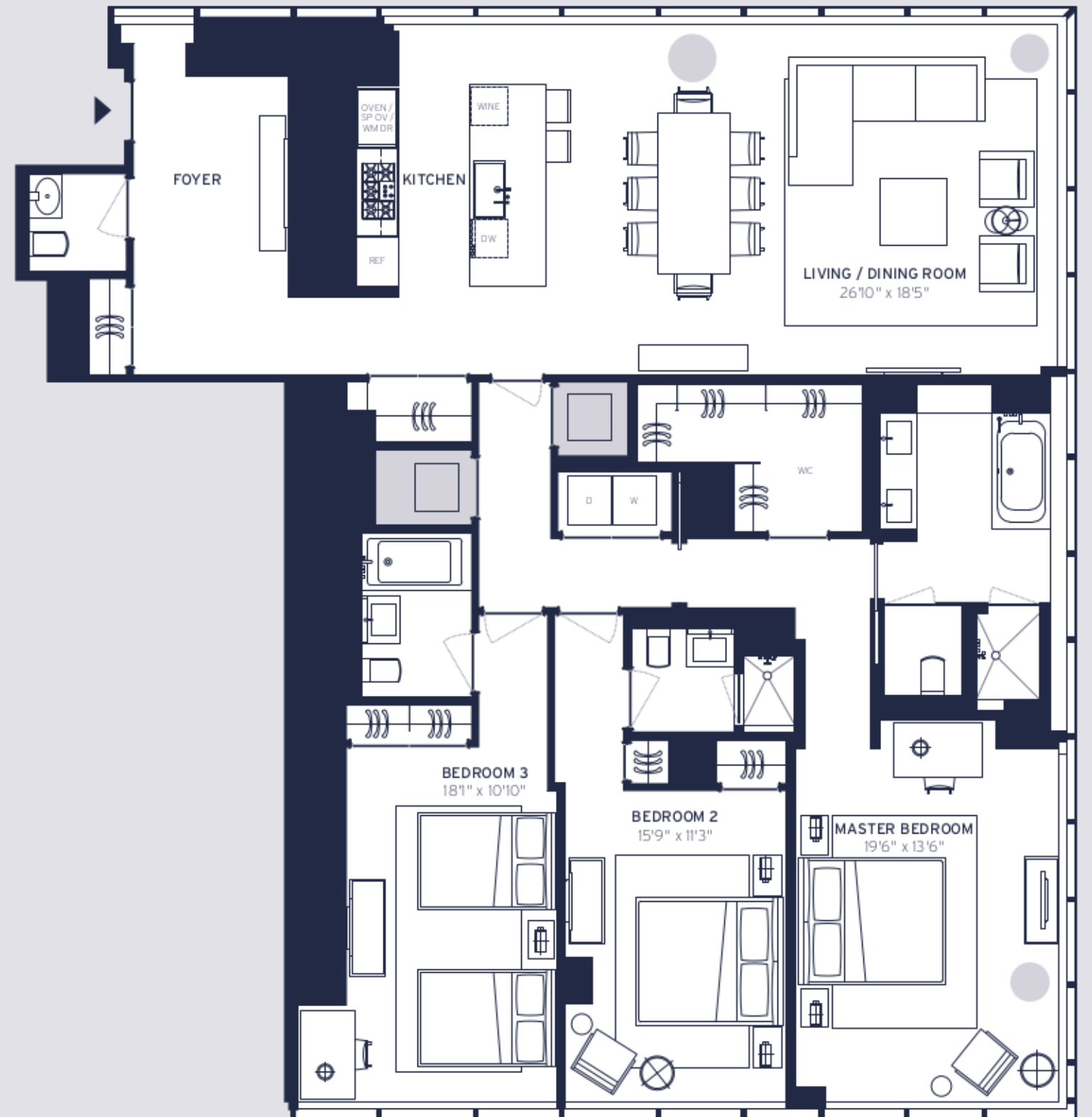
- Gracious Windowed Entry Foyer
- Corner Living / Dining Room
- Gourmet Open Kitchen
- Ensuite Bathrooms in all Bedrooms
- Corner Master Bedroom Suite with Large Walk-in Closet and Windowed Grand Master Bathroom
- Side-by-side Washer and Dryer
- Finished Ceiling Height Approximately 10'6"

FINISHES AND DESIGN

- Custom Interior Details by Thomas Juul-Hansen
- Hand Crafted Kitchen by Smallbone of Devizes
- Premium Miele and Sub-Zero Appliances
- Fine Natural Stones
- Fittings and Fixtures by Dornbracht
- Rift Sawn Oak Flooring

CENTRAL PARK

WEST 57TH STREET



All dimensions are approximate and subject to normal construction variances and tolerances. Plans and dimensions may contain minor variations from floor to floor. Square footage exceeds the usable floor area and includes columns, mechanical pipe shafts, shaftways, chaseways and conduits and other common elements. The trademark Park Hyatt Residences™ and related marks are trademarks. Neither Hyatt Corporation nor any of its affiliates (i) is the offeror of any residential units at 157 West 57th Street, or (ii) is responsible for any materials or disclosures contained in any marketing materials for such units. Equal Housing Opportunity.